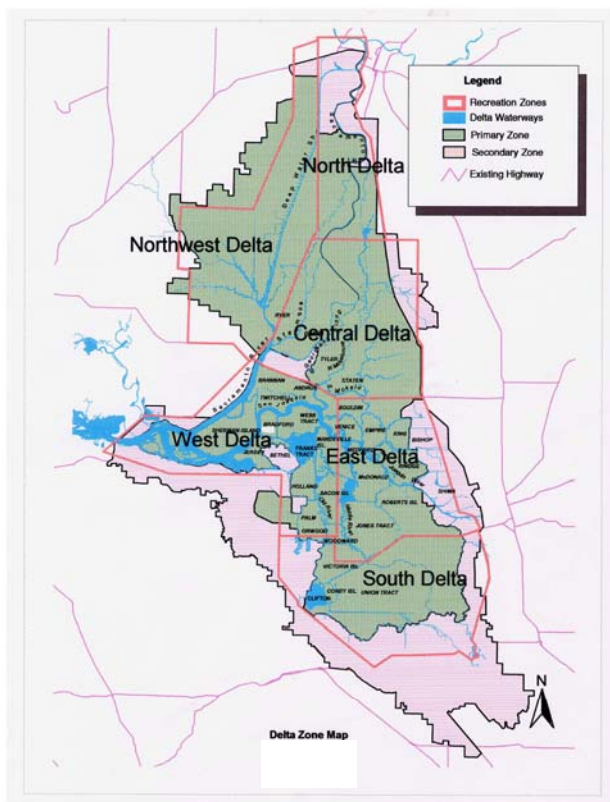


DELTA RECREATION MASTER STRATEGY

Exhibit 1: Delta Mapping Inventory

As part of the baseline data update The Dangermond Group has created a new Facilities Map Series including six maps subdividing the Delta into the six Recreation Zones. Additionally there is a new overall map, which comprises an inventory of public and private aquatic facilities in the context of the whole Delta. These maps will be posted on the project website and reviewed at the upcoming RCAC meeting on January 26th, 2005.

The purpose of this information is to define the current context for recreational planning in the Delta. A number of patterns are revealed in this process that will be helpful in looking for both potential opportunities as well as constraint conditions which may influence strategies for recreation in the Delta.



This effort is associated with the updating of the facility inventory that has been conducted jointly by Delta Protection Commission staff and The Dangermond Group. The mapping represents the physical depiction of the updated facility list (also included in this packet). The maps provide specific characteristics of the inventoried facilities. They depict facility ownership status –i.e. is it public or private? Additionally, the maps give a relative indication of facility scale. Symbols indicate the relative size of their marinas broken down into three classes:

DELTA RECREATION MASTER STRATEGY

- small (0-50 berths),
- medium (50-200 berths), and
- large (200+ berths).

Some facilities contain no marina. These are symbolized by a square instead of a circle symbol. In addition, symbols have been placed next to each facility to show other key infrastructure elements are present onsite, including:

- Pump outs,
- boat launch ramps, and
- windsurfing facilities.

The map series presents the aquatic recreation facilities in their context. For example the map series shows all channels and waterways, including old and new river channels, cuts and sloughs. The series also indicates dredging and diversion dam projects that are associated with known CALFED related projects that are planned or already developed in the South Delta. This information and corresponding map characterizations will be updated throughout this planning process.

The map series shows all primary public roads, major and minor, as well as all publicly own lands in the Delta. In addition, special areas that are managed in part by government and in part by non-government entities have also been depicted, such as the Stone Lakes National Wildlife Refuge. Together these characterizations give a comprehensive picture of what resources are accessible to the public

The Dangermond Group has also compiled the best available data for City Limits and Spheres of Influence for all incorporated cities within, adjoining or directly affecting the Delta. The new town of Mountain House has been included in this data set.

Finally, The Dangermond Group digitized the official Delta Protection Commission Map for this series, giving an accurate boundary of both the Primary and the Legal Delta as defined by law.

The scale of all work was conducted at 1:100,000.